

a museum found in a front yard on a mid-summer walk. I enjoyed the museum very much. It reminded me of myself from many months ago and I wanted to log



Engle Museum: Insects, rocks, pinecones, etc.



TOXIC PUDDLE  
← where did it come from?



I think I found the bird from the egg in great numbers. I know when seen one alive. That fall, Swainson's Thrushes ate from the egg.

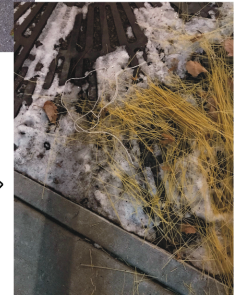


When I was young I would draw pictures of rats with their spines sticking out. I was intrigued with the texture between predator and prey. This rat was probably just run over by a car. There are not many houses in the city.



100% (Dinner)

Green beans



pasta →

HOLE GARDEN



It is how we created windows to the ground and to plants and "thanks"